

Your vision for quality.

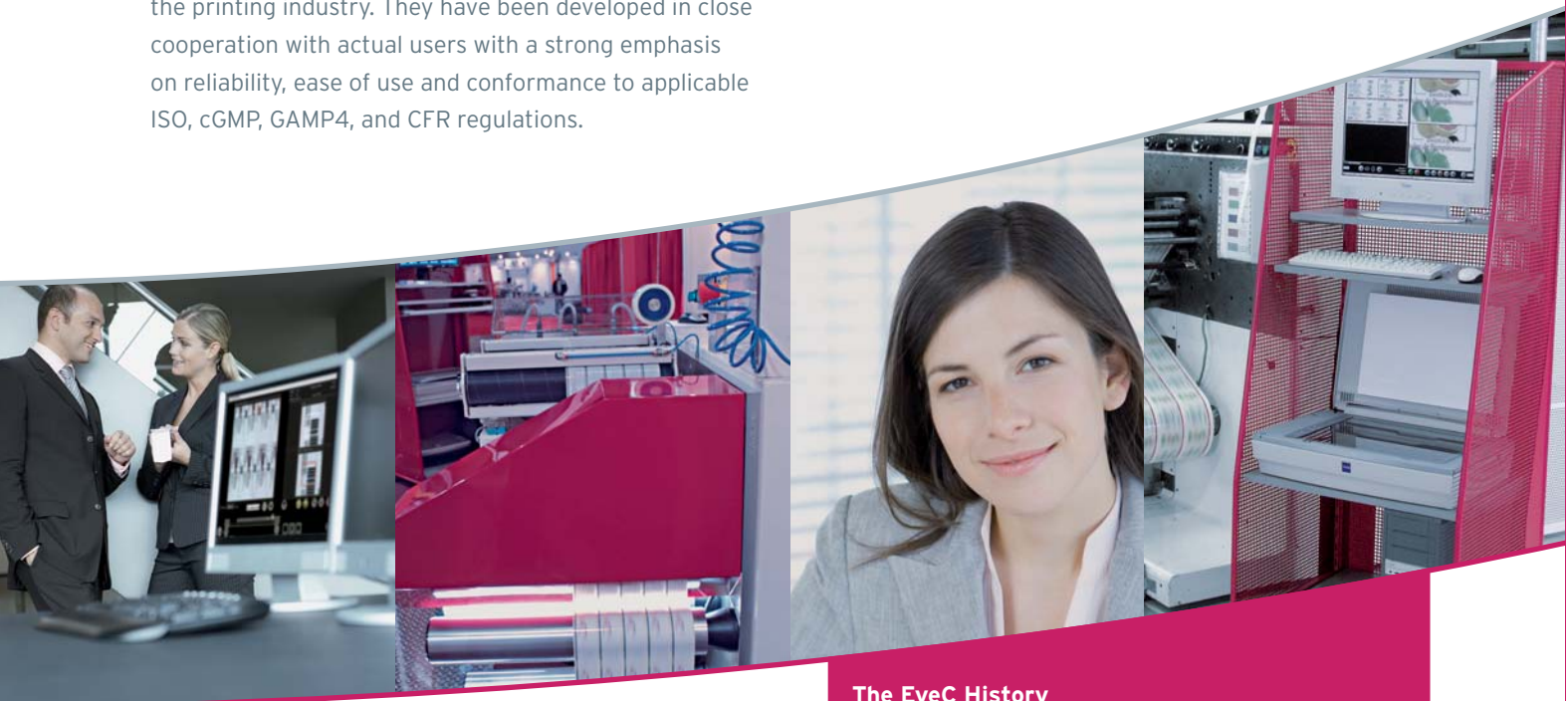
# EyeC ProofRunner™



# The company

EyeC is a leading vision technology company, headquartered in Hamburg, Germany. We are focused exclusively on high performance inspection systems for the print industry. Our R&D and Customer Support staff consists of highly skilled and experienced engineers, graduated in either Electronic Engineering and/or Computer Technology. Our products are based on the latest pattern recognition technology, designed to meet the needs of the printing industry. They have been developed in close cooperation with actual users with a strong emphasis on reliability, ease of use and conformance to applicable ISO, cGMP, GAMP4, and CFR regulations.

EyeC systems are in use at numerous customers in the printing industry world wide. Applications include offset printed inserts, folding cartons, flexographic pressure sensitive labels for food, medical and pharmaceutical applications.



**So if you are looking for solutions in demanding circumstances be sure to ask us - we have the answers you couldn't find before!**

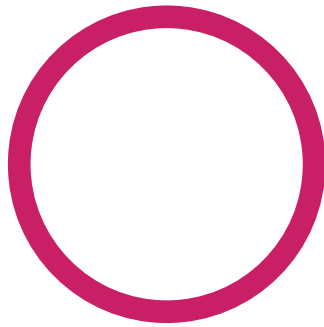
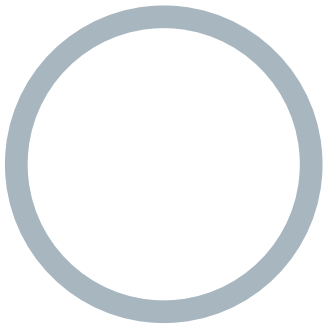
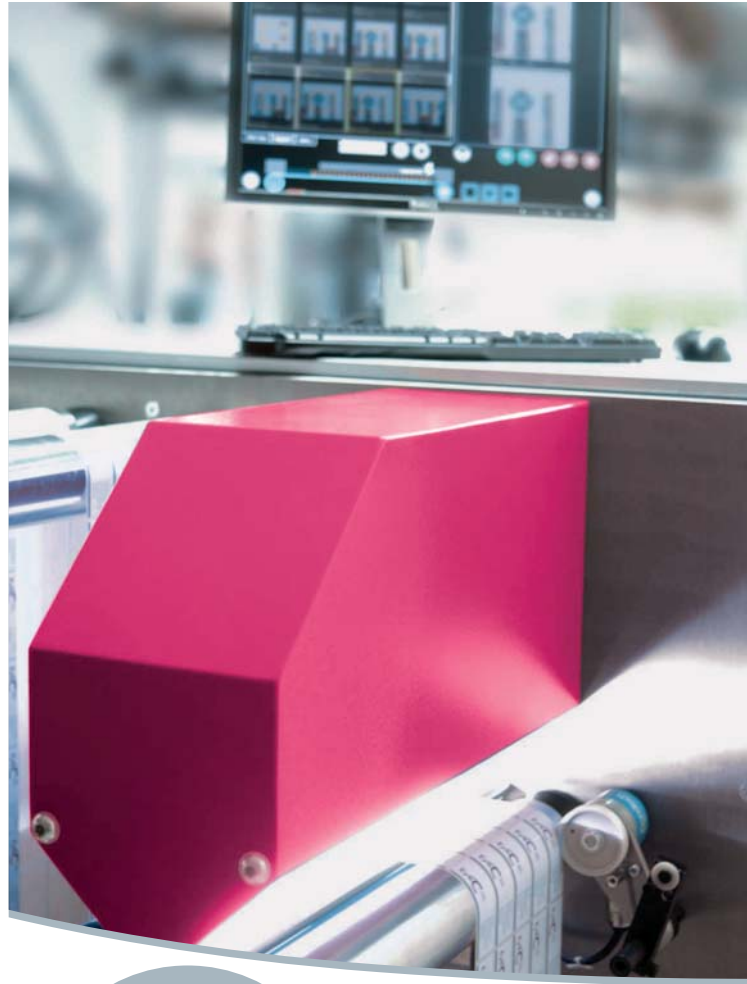
## The EyeC History

- 2003** Introduction of the EyeC Proofiler™ 400
- 2004** Development and first installations of the EyeC Proofiler™ 1000 for cartons, EyeC Proofiler™ 600 for labels
- 2005** Development of the EyeC Proofiler™ Braille and EyeC Proofiler™ 700 for patient information leaflets, barcode inspection
- 2006** Development and roll-out of the EyeC ProofRunner™

# EyeC ProofRunner™

## 100% verification - print and content

Finally there is an easy way to check all your prints against your customer proof! With an EyeC ProofRunner™ you get automatic 100% inspection of all items across the web, content verification against your customer proof as well as the best mix-up prevention you can imagine - right on the press or on a rewinder. The process is simple and yields accurate results; so you can rest assured that you will print exactly what your customer expects. Inspection results are instantly available and can be used for immediate corrective action. This gives you the means to completely control and monitor your printing process and to avoid scrap. In short: 100% inspected, 100% content verified and 100% compared to the customer proof!



### Easy to use

The EyeC ProofRunner™ has been designed with ease of use in mind. Any print machine operator can perform a meaningful inline inspection within minutes.

- **The customer proof is loaded automatically based on the entered job data.**
- **All items across the web are automatically identified.**
- **Irrelevant areas are automatically disregarded**
- **Significant deviations are brought to the operator's attention.**
- **A full job report is instantly available.**

### Smart

The EyeC ProofRunner™ uses a compact, high speed line scan camera to continuously acquire a high resolution image of the entire web. A high performance computer system then identifies all printed items on the web and tracks them through the entire print- or converting run. The same computer also performs an intelligent comparison of each printed item against the customer proof. The advanced pattern analysis of the EyeC ProofRunner™ is capable of distinguishing between the different types of defects, so every significant deviation will get caught and displayed while permissible fluctuations caused by the printing process itself - like minor registration errors or small squeeze marks around individual letters - can be automatically passed.

## Reliable

The EyeC ProofRunner™ finds all typical defects such as:

- missing parts of letters
- filled in letters
- hickies
- smudges
- missing ink
- spots
- color deviations

Through the prepress-link to the signed customer proof even content errors resulting from mistakes in the preprint-area can be detected like:

- typos
- reversed colors in graphical elements
- wrong font or font attributes (bold, italic etc.)
- incorrect character spacing
- missing special characters or accents

## Flexible

The use of different parameter sets allows the EyeC ProofRunner's™ sensitivity to be adapted product- or customer specific quality standards.

## Comprehensive

The EyeC ProofRunner™ gives you the advantage that you can be sure to print and deliver exactly what your customer expects.

## The EyeC ProofRunner™

- is objective
- is easy to use
- inspects 100% of the web, graphics and text, color and copy
- asserts consistency between all printed objects that are printed simultaneously
- provides content verification, in any language and any alphabet
- gives you 100% mix-up prevention
- and gives 100% assurance that the print is identical to the signed off customer proof!
- is fully validatable

## EyeC ProofRunner™ Basic

For an application which is very price sensitive.

## EyeC ProofRunner™ Convert Color

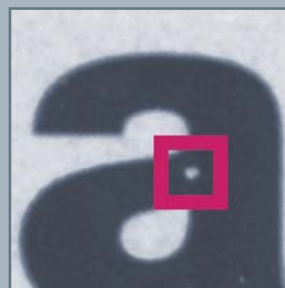
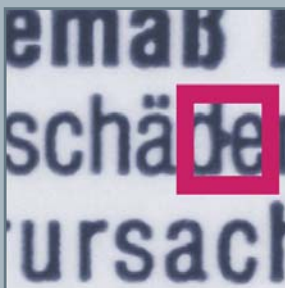
For the classic inspection on the converting machine with color.

## EyeC ProofRunner™ Convert Fast

For the classic inspection on the converting machine with the highest resolution at full speed.

## EyeC ProofRunner™ Print

To be mounted on the press, color images with high resolution and Web view function.



Examples of flaws

## Technical specifications

Performance*	EyeC ProofRunner™			
Version	Basic	Convert Color	Convert Fast	Print
Inspection width (mm)	450 mm	450 mm	450 mm	450 mm
Mode	B&W	Color	B&W	Color
Pixel/Line	2048	2048	4096	4096
Speed (max.)	1845,7 m/min	425,8 m/min	922,9 m/min	116,0 m/min **
Resolution (dpi)	116 dpi	116 dpi	231 dpi	231 dpi
Pixelsize (µm)	220 µm	220 µm	110 µm	110 µm
Pixelsize (")	9 mil	9 mil	4 mil	4 mil
<b>Features</b>				
Operating System	Windows XP Professional			
Networking	Fast Ethernet			
<b>Requirements</b>				
Ambient Temperature	5°C to 35°C (42°F to 95°F)			
Ambient Humidity	10% to 80%			
Power Supply	100-120 V / 50-60 Hz / 9 A or 200-240 V / 50-60 Hz / 4,5 A			
<b>Options</b>				
Test vs. Customer Proof	optional	standard	standard	standard
Barcode inspection	not available	not available	optional	optional
Color monitoring	optional	optional	optional	optional
<p>* All values provided are to our best knowledge at the time this sheet has been created and subject to change without further notice. These technical specifications are based on standard assumptions, please inquire the available speed and resolution of your system with the quotation. The specifications stated in the quotation and Order confirmation are assured product capabilities.</p> <p>** The system can be used at a resolution of 115 dpi up to a speed of 232 m/min and at a resolution of 89 dpi at a speed of 300 m/min.</p>				

**GERMANY (HQ)  
AUSTRIA, SWITZERLAND**

**EyeC GmbH**

Ludwig-Erhard-Straße 6  
20459 Hamburg  
Germany  
Phone: +49 40 / 3750 326-0  
Telefax: +49 40 / 3750 326-19  
E-mail: [info@eyec.de](mailto:info@eyec.de)  
[www.eyec.de](http://www.eyec.de)

**UNITED KINGDOM, IRELAND**

**EyeC UK Limited**

6 Dauntless Road  
Reading  
Berkshire RG7 3NZ  
United Kingdom  
Phone: +44 118 983 3347  
Mobile: +44 7711 851 283  
E-mail: [info@eyec-ukandireland.co.uk](mailto:info@eyec-ukandireland.co.uk)  
[www.eyec-ukandireland.co.uk](http://www.eyec-ukandireland.co.uk)

**BELGIUM, LUXEMBOURG,  
THE NETHERLANDS**

**EyeC Benelux**

Mussenstraat 35  
7557 BV Hengelo  
The Netherlands  
Phone: +31 74 2502 533  
Telefax: +31 74 2502 514  
E-mail: [erik.hoving@eyec-benelux.com](mailto:erik.hoving@eyec-benelux.com)  
[www.eyec-benelux.com](http://www.eyec-benelux.com)

**SPAIN**

**Sercoyse, S.L.**

Reforma, 1  
08901 L'Hospitalet de Llobregat  
(Barcelona)  
Spain  
Phone: +34 93 2610486  
Telefax: +34 93 3376619  
E-mail: [sercoyse@sercoyse.com](mailto:sercoyse@sercoyse.com)  
[www.sercoyse.com](http://www.sercoyse.com)

**AMERICAS**

**EyeC America, LLC**

4140 Aldawood Hills Dr.  
Akron, Ohio 44319  
United States of America  
Phone: +1 330 644 6841  
Telefax: +1 330 644 5994  
E-mail: [info@eyec-america.com](mailto:info@eyec-america.com)  
[www.eyec-america.com](http://www.eyec-america.com)

**AUSTRALIA, SOUTH-EAST ASIA**

**GMS Pacific Pty. Ltd.**

3/352 Ferntree Gully Road  
Notting Hill  
Melbourne, VIC 3168  
Australia  
Phone: +61 3 9535 9777  
Telefax: +61 3 9535 9780  
E-mail: [info@gmspacific.com](mailto:info@gmspacific.com)  
[www.gmspacific.com](http://www.gmspacific.com)

**CHINA**

**EyeC China**

9F. 410. Sec. 5, Zhung Xiao E. Rd.  
Taipei  
Taiwan, R.O.C  
Phone: +886 2 8780 3352  
Telefax: +886 2 8780 3376  
Mobile: +886 932 515 863  
E-mail: [info@eyec-china.com](mailto:info@eyec-china.com)  
[www.eyec-china.com](http://www.eyec-china.com)

**JAPAN**

**Xyratex Japan**

**Ken Fujioka, Makoto Onou**

Wakoh Bldg., 3-7-30,  
Azusawa, Itabashi-Ku  
Tokyo 174-0051  
Japan  
Phone: +81 3 3558 2411  
Telefax: +81 3 3558 1557  
E-mail: [info@xyratex.co.jp](mailto:info@xyratex.co.jp)  
[www.xyratex.co.jp](http://www.xyratex.co.jp)